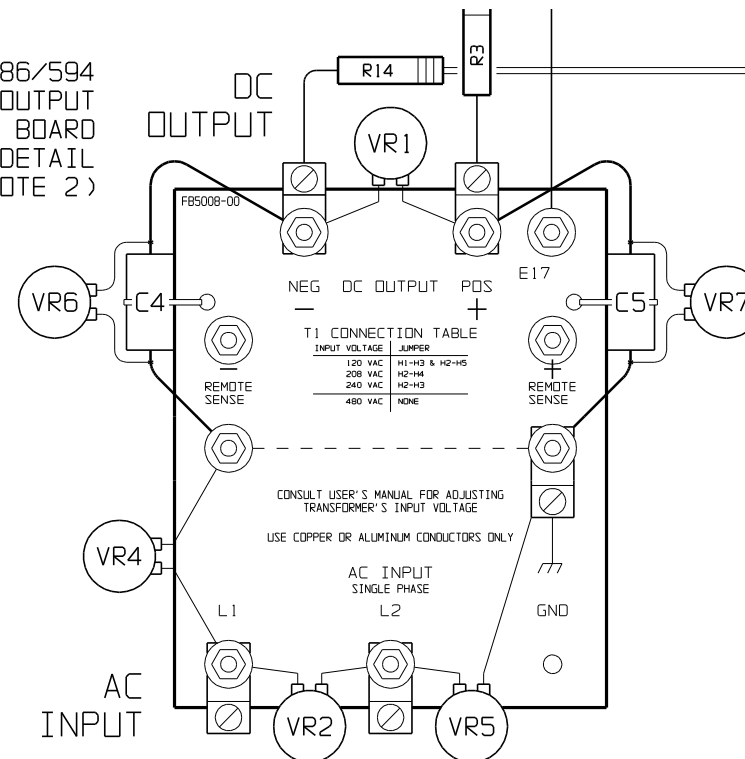


STYLE-586/594
INPUT-OUTPUT
TERMINAL BOARD
TB1 DETAIL
(NOTE 2)



I/O TERMINAL	DESCRIPTION - TYPE	CONNECTION
TB1(+/-)	POS/NEG OUTPUT TERMINALS - CU-ALUMINUM COMPRESSION LUG	#14-6 AWG.
REM SENSE(+/-)	POS/NEG REMOTE SENSE TERMINALS - 10-32 SCREW HARDWARE	#10 RING LUG
TB1-GND	GROUND TERMINAL - CU-ALUMINUM COMPRESSION LUG	#14-6 AWG.
TB1-L1/L2	AC INPUT TERMINALS - CU-ALUMINUM COMPRESSION LUG	#14-6 AWG.
TB3	SUMMARY ALARM TERMINAL BLOCK - SOLDERLESS COMPRESSION	#22-14 AWG.
TB8	TEMPCO PROBE (A10) INTERCONNECTION TERMINAL BLOCK	#22-14 AWG.

NOTES:

- 1) FOR DETAIL VIEWS OF ALL PC BOARDS (A1, A5, etc.) SEE DRAWING JE5030-10.
- 2) I/O PANEL PROTECTION (SHOWN ONLY ON DETAIL) CONSISTS OF EMI FILTER CAPACITORS (C4 & C5) AND SURGE SUPPRESSORS (VR1, VR2, VR4, VR5, VR6 & VR7).
- 3) DATA NAMEPLATE IS LOCATED ON EXTERIOR LEFT SIDE WALL OF ENCLOSURE. USER'S MANUAL POCKET IS LOCATED ON EXTERIOR RIGHT SIDE WALL OF ENCLOSURE.
- 4) SAFETY COVER DISPLAYS COMPONENT LAYOUT DIAGRAM, SCHEMATIC & INSTALLATION NOTES.

AT10.1 GROUP I STANDARD COMPONENTS

SYMBOL	DESCRIPTION	SYMBOL	DESCRIPTION
A1	MAIN CONTROL PRINTED CIRCUIT BOARD	VR4	AC INPUT SURGE SUPPRESSOR (L1 TO GND)
A6	RECTIFIER ASSY (A3/A16/HEATSINK)	VR5	AC INPUT SURGE SUPPRESSOR (L2 TO GND)
C4	DC OUTPUT EMI FILTER CAPACITOR	VR6	DC OUTPUT SURGE SUPPRESSOR (- TO GND)
C5	DC OUTPUT EMI FILTER CAPACITOR	VR7	C OUTPUT SURGE SUPPRESSOR (+ TO GND)
CB1	AC INPUT CIRCUIT BREAKER (STANDARD)		
CB2	DC OUTPUT CIRCUIT BREAKER (STANDARD)		
L1	MAIN INDUCTOR		
R2	CURRENT RATING RESISTOR		
R3	BALLAST RESISTOR (12/24 VDC)		
R4	SCALING RESISTOR (POSITIVE LEG)		
R6	VOLTAGE CROWBAR RESISTOR		
R14	SCALING RESISTOR (NEGATIVE LEG)		
T1	POWER ISOLATION TRANSFORMER		
TB3	SUMMARY ALARM CONTACTS		
TB5	RESISTOR TERMINAL BLOCK		
TB8	TEMPCO PROBE (A10) TERMINAL BLOCK		
VR1	DC OUTPUT SURGE SUPPRESSOR (- TO +)		
VR2	AC INPUT SURGE SUPPRESSOR (L1 TO L2)		

OPTIONAL COMPONENTS

2	E2029	042805		THIRD ANGLE PROJECTION	
1	E1742	091004	GRB	DRAWN BY MCR 022703 APPROVED <i>GRB</i> 022803	
0	E1154	022703	<i>GRB</i>	UNLESS OTHERWISE NOTED DIMENSIONS ARE IN INCHES. TOLERANCES ARE:	TITLE AT10.1 SERIES BATTERY CHARGER (STANDARD) INTERNAL COMPONENT LAYOUT: STYLE-586/594 DRAWING No. JE5027-00 REV 2 B
REV	ECN No	DATE	APP	SCALE NTS	PART No. JE5027-00 SHEET 1 OF 1