

Cyberex SFCM Configurator/Monitor

User's Manual

Version 1.4

Updated: 11/16/07



Thomas & Betts Power Solutions

5900 Eastport Boulevard • Richmond, VA 23231-4453

Tel: 800-238-5000 • Fax: 804-236-4047

TABLE OF CONTENTS

TABLE OF CONTENTS	2
1.0 Program Description.....	2
2.0 PC System Requirements	2
3.0 Installation	2
4.0 The Initial Login	2
5.0 Comm. Port Settings	4
6.0 General Comm. Port Usage on the SFCM.....	4
7.0 The Main Control Window	4
8.0 The Subfeed Windows	6
8.1 Changing Settings on the Subfeed Windows	6
8.2 Resetting Latched Alarms and Warnings	7
8.3 Calibrating the SFCM	7
9.0 Panel Selection	8
10.0 The System and Panel Settings Window	8
11.0 Upgrading/Downgrading the SFCM Firmware	9
12.0 Upgrading BCM Firmware	11
13.0 Upgrading BMM Firmware.....	12
14.0 Opening the Terminal Window	13
15.0 Temporarily Closing the PC's Serial Port	13
16.0 Creating Service Port Script Files.....	13
16.1 Procedure for Creating a New Script File	14
16.2 Procedure for Creating a "Verify Script File"	16
17.0 Running Service Port Script Files.....	16

1.0 Program Description

This program can be used for configuring and monitoring the data on a Cyberex Subfeed Circuit Monitor (SFCM). It can be used in either of the following communications modes: RS-232, RS-485, or TCP. Limited configuration can be done when in the RS-485 or TCP modes. This program can also be used for upgrading Cyberex BCM and BMM modules.

2.0 PC System Requirements

- IBM Pentium or higher (or compatible) PC with a free serial port, network interface card, and a minimum screen resolution setting of 1024 by 768.
- Microsoft Windows 95 or higher.

3.0 Installation

This program can be installed by double-clicking the 'SFCMCFMON_Setup_vX_X_X.exe' file provided and following the on-screen instructions. This setup program will put a shortcut on the Desktop and in the Windows Start→Programs folder.

4.0 The Initial Login

When the program is started, the main window will appear as shown in Figure 4-1 below.

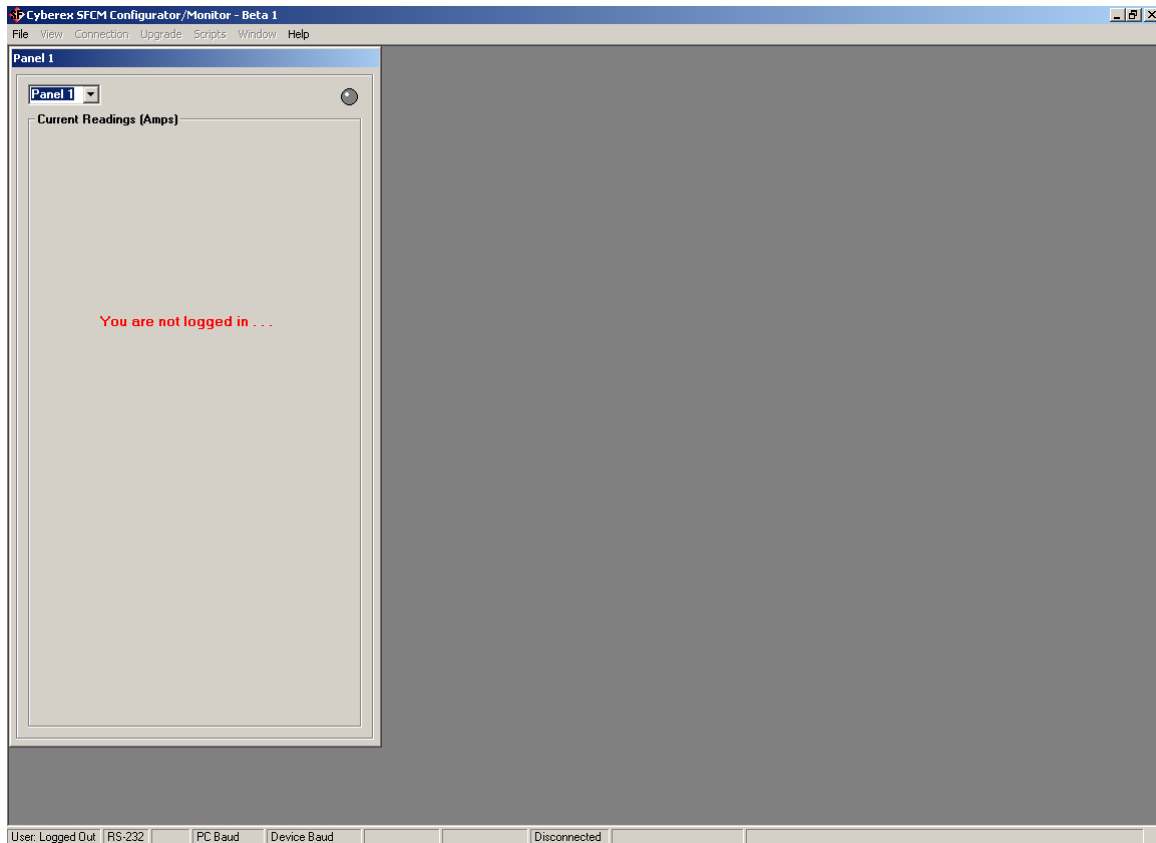
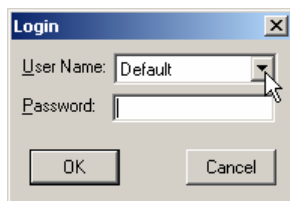


Figure 4-1 – The Main Screen

An initial login is required before using the program. Once you are logged in, you have the option of logging out between uses, or remaining logged in for future uses. To log in, click File→Login in the main menu bar. The Login dialog box will open as shown below.



There are three login levels as follows.

Level	User Name	Default Password	Permissions
0	Default	Default	Permission to view meter readings and settings only.
1	Administrator	Admin	Permission to configure and calibrate the SFCM in addition to those of Level 0 (above).
2	Supervisor	Super	Permission to upgrade/downgrade the SFCM firmware, to change the SFCM passwords, and to use configuration script files, in addition to those of Level 1 (above).

When you are finished using the program, you have the option of logging out or remaining logged in for the next use. To log out, click File→Logout in the main menu bar.

5.0 Comm. Port Settings

Once you are logged in and you are connected to the DB9 (RS-232) connector on an SFCM unit via a null-modem serial cable, the SFCM Configurator program will start polling the unit. If not, you may need to change settings on the "Comm Port Settings" dialog box (File→Comm Port Settings on the main menu bar) as shown below.

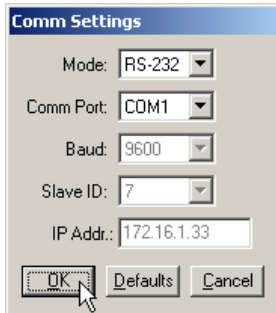


Figure 5-1 – The Comm Port Dialog Box

The program defaults to the RS-232 Mode and the COM1 Port as shown above. If needed, select a different Comm port and click the OK button to save the new setting.

6.0 General Comm. Port Usage on the SFCM

The SFCM is designed to be configured using the RS-232 Mode (via the DB9 connector). When using this mode, the baud and Slave ID settings can be changed without affecting the communications. The various baud and Slave ID settings in the SFCM affect only the RS-485 Mode (via the terminal block). In RS-232 Mode, the baud is always "9600" and the Slave ID is always "7". The Baud and Slave ID settings in the "Comm Port Settings" show the settings that will be applied in the RS-485 Mode. Note that these settings are disabled (grayed-out) when the RS-232 Mode is selected.

7.0 The Main Control Window

When the program is started and the polling begins, the circuit breaker on the Main Control window will appear and will be arranged depending on whether or not the SFCM is configured for Neutral Current Monitoring.

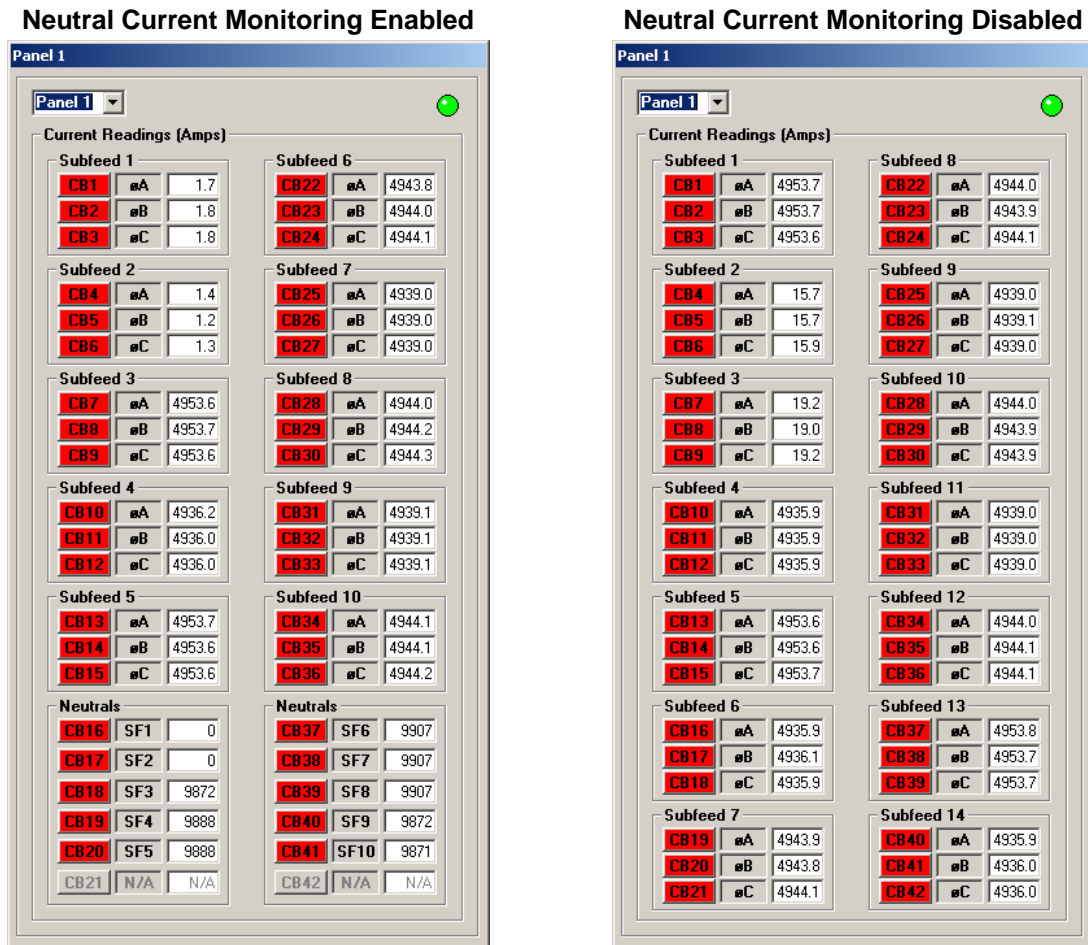
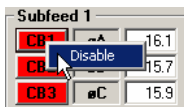


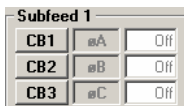
Figure 7-1 – The Main Control Window

Left-clicking on any of the CB buttons on the Main Control window will cause the associated Subfeed window to open, as shown in a later section below. (Multiple Subfeed windows can be opened at the same time.)

Any of the subfeeds can be disabled or enabled by right-clicking on any of the corresponding CB buttons on the Main Control window and clicking the Disable or Enable popup, as shown below.



When a subfeed is disabled, its CB buttons will appear grey on the Main Control window as shown below. When a subfeed is enabled, its CB buttons will appear green if no alarms or warnings exist for that circuit, or will appear red or yellow if there are any alarms or warnings, respectively.



8.0 The Subfeed Windows

The metering, alarm/warning states, and configuration settings for each subfeed can be seen in its Subfeed window as shown below. Active alarms and warnings will appear as red or yellow, respectively.

These windows can be opened by either clicking a corresponding CB button on the Main Control window, or by selecting it from View→Subfeed x in the main menu bar.

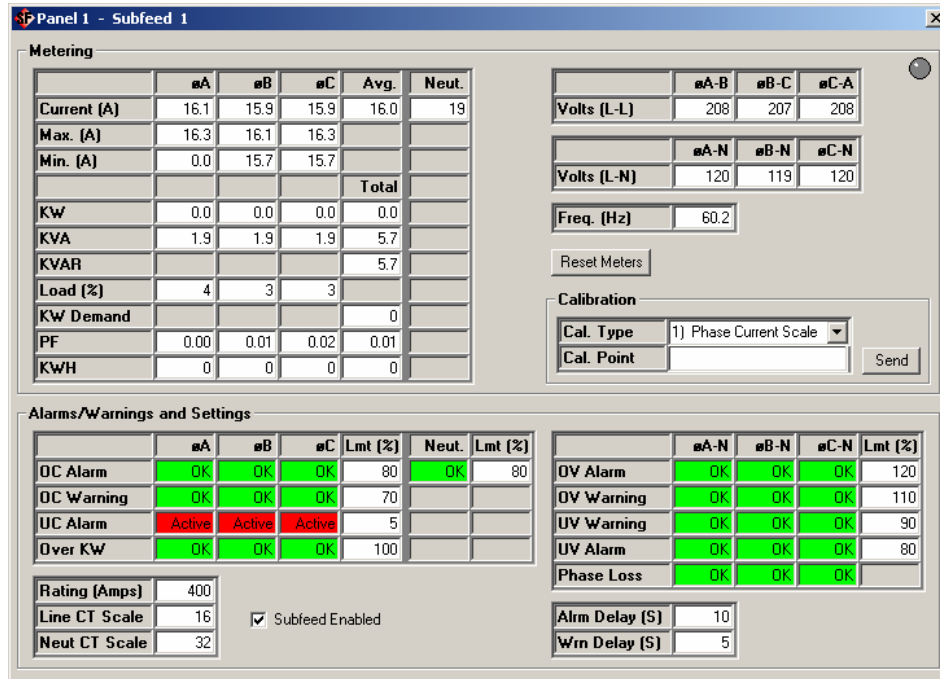


Figure 8-1 – Subfeed Window

8.1 Changing Settings on the Subfeed Windows

When logged in on Level 1 or 2, you can change the settings in the Subfeed windows by double-clicking in the setting you want to change. When this is done, enter the new number into the popup dialog box that appears as shown below. Any setting inside the "Alarms/Warning and Settings" frame can be changed like this.

Also, when logged in on Level 1 or 2, you can reset the Min/Max Currents and the KWH readings by clicking the "Reset Meters" button on the Subfeed window.

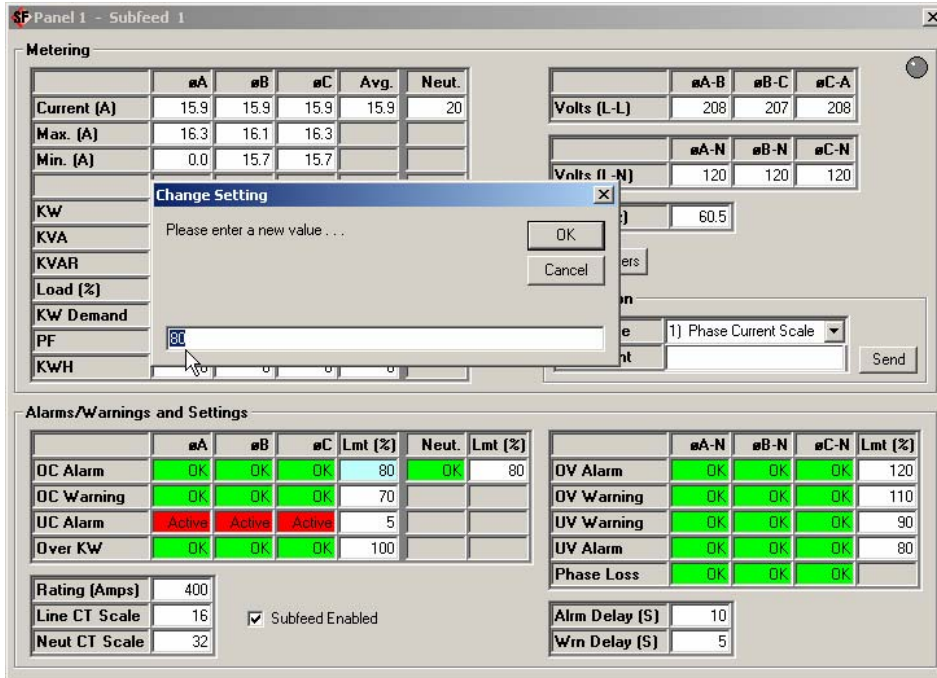


Figure 8-2 – Changing Settings in the Subfeed Window

8.2 Resetting Latched Alarms and Warnings

When logged in on Level 1 or 2, and the "Latching Alarms/Warnings" option is enabled (see the "Latching Alarms/Warnings" checkbox on the System Settings window), you can reset latched alarms and warnings by double-clicking on the red or yellow alarm/warning boxes on the Subfeed window. This will reset all of the alarms and/or warnings that are common with a certain Modbus register. These alarms/warnings are grouped as follows.

- OC Alarms (øA, øB, øC, Neut.)
- OC Warnings (øA, øB, øC)
- UC Alarms (øA, øB, øC)
- Over KW Alarms (øA, øB, øC)
- All OV/UV Alarms/Warnings
- Phase Loss Alarm

8.3 Calibrating the SFCM

Note: This function is available only in RS-232 mode.

When logged in on Level 1 or 2, you can calibrate the SFCM using the controls on the Calibration frame on the Subfeed windows. There are 7 calibration types that can be selected using the dropdown box in the Subfeed window as shown below. For calibration instructions, refer the SFCM User Manual.

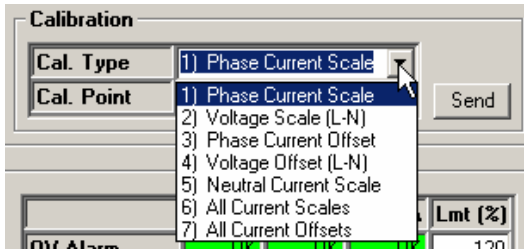


Figure 8-3 – Calibration Type Selection in the Subfeed Window

9.0 Panel Selection

Each SFCM unit can monitor up to four panels. The subfeeds in each of these four panels can be monitored and configured in the Cyberex SFCM Configurator/Monitor program by selecting the panel in the View dropdown menu as shown below.

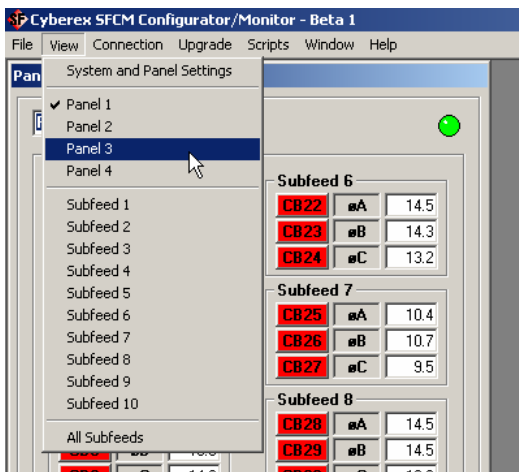


Figure 9-1 – Panel Selection

10.0 The System and Panel Settings Window

The system level configuration settings can be seen in the System and Panel Settings window as shown below. This window can be opened by selecting View→System and Panel Settings in the main menu bar.

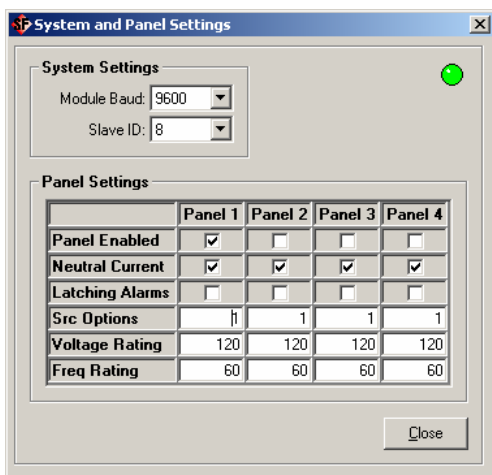


Figure 10-1 – System and Panel Settings Window

When logged in on Level 1 or 2, you can change the settings in the System and Panel Settings window. The items can be changed by selecting different values in the combo (dropdown) boxes, clicking the checkboxes, or double-clicking the white text boxes, like previously mentioned for the settings on the Subfeed windows.

11.0 Upgrading/Downgrading the SFCM Firmware

You must be in RS-232 mode and logged in on Level 2 to use the SFCM Configurator application for upgrading or downgrading the SFCM firmware. To see the Upgrade window as shown below in Figure 11-1, select Upgrade in the main menu bar.

When the program is installed, it is not configured with any "Software Upgrade File" paths, which appear in the combo box in the Upgrade Software page as shown below. Software upgrade file paths can be added, removed and saved by the program so that they will still be there when the program is closed and reopened later.

A new software upgrade file path can be added by dragging from Windows Explorer and dropping into the white "Software Upgrade File" combo box. Then it can be saved for future use by clicking the Save button.

You can also add a new software upgrade file path by clicking the Browse button just below the "Software Upgrade File" combo box. A new window will open as shown in Figure 11-2 below. This is a standard "File->Open" dialog box that lets you browse through folders so that you can find and select the upgrade file that you need. Click the Open button after selecting the correct upgrade file as shown below.

Once a new software upgrade file path selected, the Save button (below the white combo box) will become enabled. You can then save the new software upgrade file path in the list by clicking the Save button.

To see the software upgrade file paths in the list, click on the down-arrow button on the right-hand side of the combo box as shown below in Figure 11-3. Then you can select the file that you want to use for the upgrade.

Note: To remove a path from the list, simply select the path and click the Remove button in that frame.

When a software upgrade file is selected (like shown in Figure 11-3), you can click the "Open Folder" button (in the same frame) to open its folder with the file selected in Windows Explorer. This is handy for checking file dates, etc.

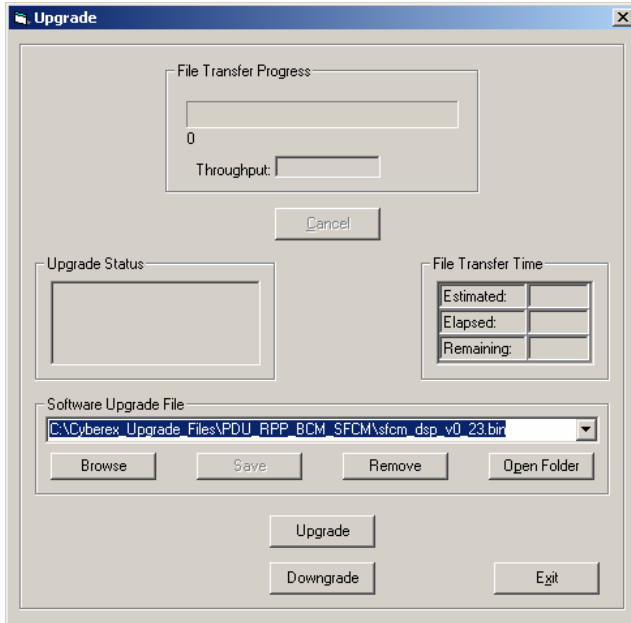


Figure 11-1 – Upgrade Window

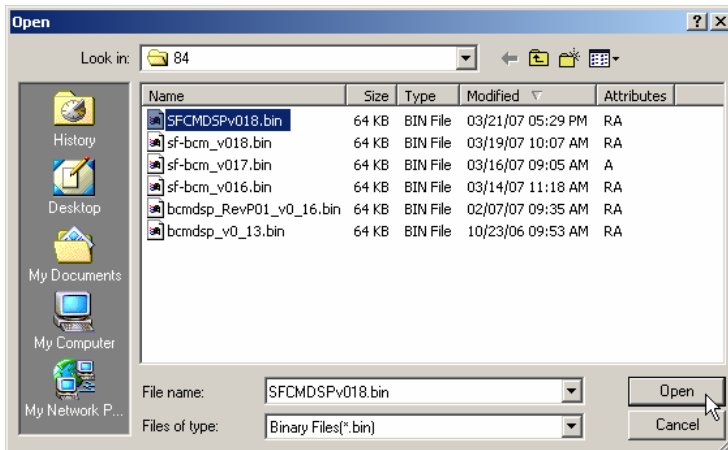


Figure 11-2 – Browsing Software Upgrade Files

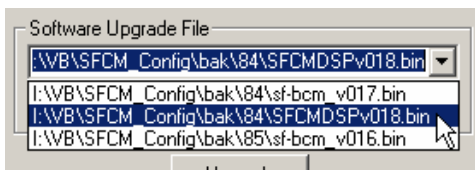


Figure 11-3 – Selecting Saved Software Upgrade Files

Once the software upgrade file is selected, click the Upgrade button to start the upgrade. The File Transfer Progress bar should start growing and the "Upgrade in process" message should appear as shown below. The Cancel button can be clicked to stop the upgrade, if needed.

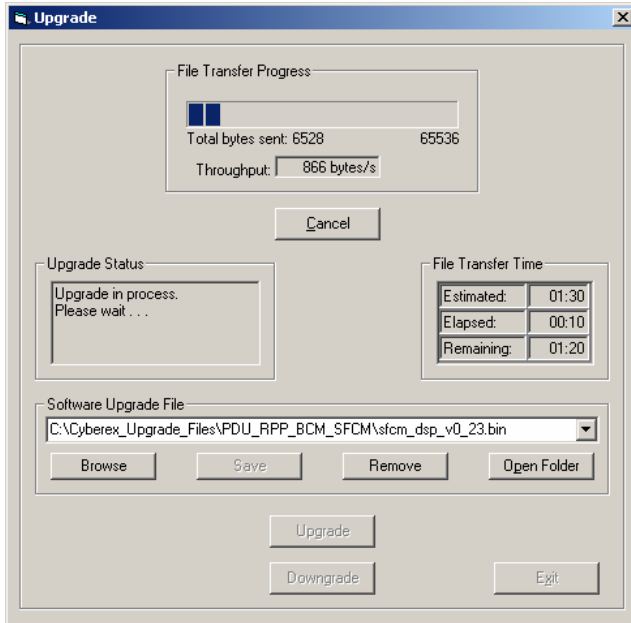
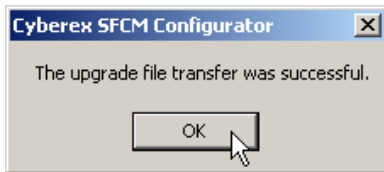
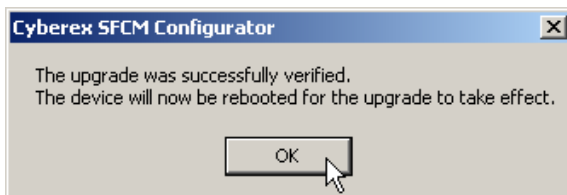


Figure 11-4 – Software Upgrade in Process

The upgrade file transfer takes about 1 ½ minutes. After the file transfer has completed, you should see the following message box pop up.



After clicking the OK button, you should see the following message box pop up. After acknowledging these two messages, the SFCM should start running with the new software upgrade loaded.



12.0 Upgrading BCM Firmware

This application can be used to upgrade BCM units via the serial service port. When a BCM unit is connected, this program will detect it and display the message in Panel window as shown below. It will also display the existing BCM software version in the status as shown below.

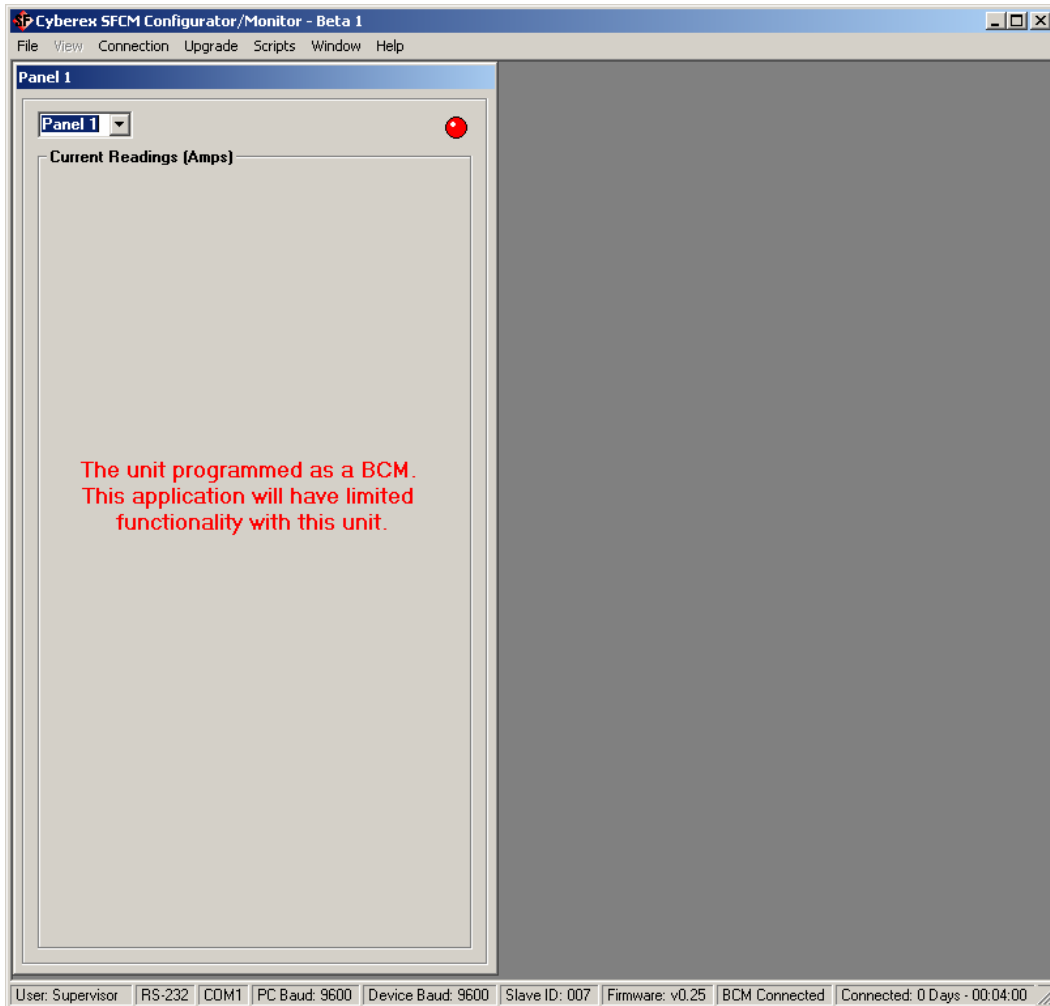


Figure 12-1 – The Main Screen when a BCM is Connected

You can now open the Upgrade window and upgrade the BCM software using the same procedure as for upgrading the SFCM software (above).

13.0 Upgrading BMM Firmware

This application can be used to upgrade BMM units via the serial service port. When a BMM unit is connected, this program will detect it. It will then open the Terminal window and send the "sys re-boot", which should cause the unit to reboot and display the existing software version as shown below.

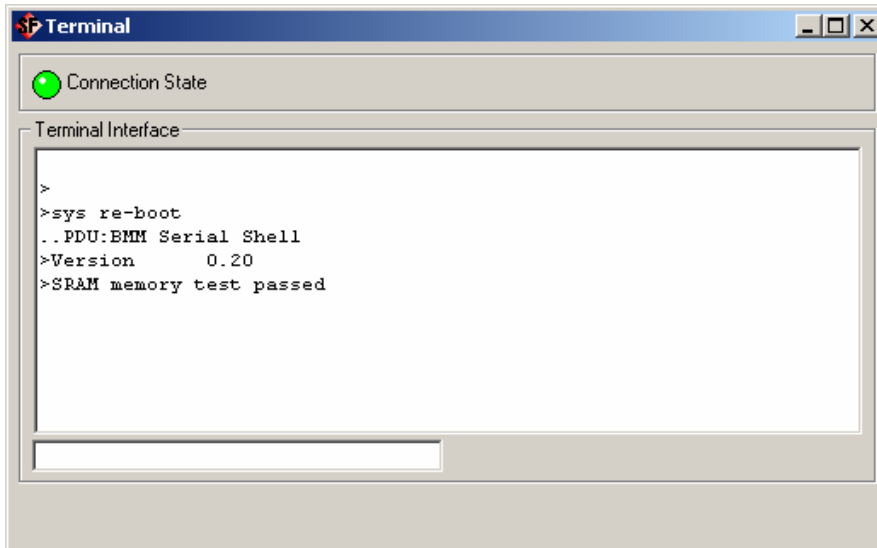
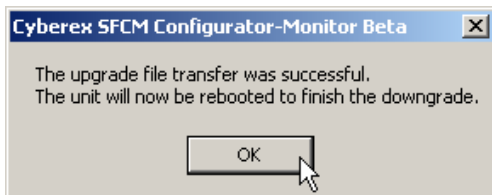


Figure 13-1 – Terminal Window

Now, you can open the Upgrade window and upgrade the BMM software using the same procedure as for upgrading the SFCM software (above). After the file transfer has completed, you should see the following message box pop up.



After the unit has rebooted, verify that the new software version number appears in the Terminal window. (See Figure 13-1 above.)

14.0 Opening the Terminal Window

When logged in on Level 1 or 2, you can open the Terminal window, as shown in Figure 13-1 above, by selecting Connection→Terminal on the main menu bar. When the Terminal window is open, you can enter service port commands into the smaller lower textbox.

15.0 Temporarily Closing the PCs Serial Port

The PCs serial port can be temporarily closed and reopened without exiting the SFCM Configurator application by selecting Connection→Disconnect and Connection→Connect on the main menu bar. This is convenient to use when you want to temporarily communicate with the SFCM with another application.

16.0 Creating Service Port Script Files

This application can be used to create service port script files to use for configuring SFCM units and for verifying the settings after configuring. To open the Create Script File window, select Scripts→Create Script in the main menu bar. The window will open as shown below.

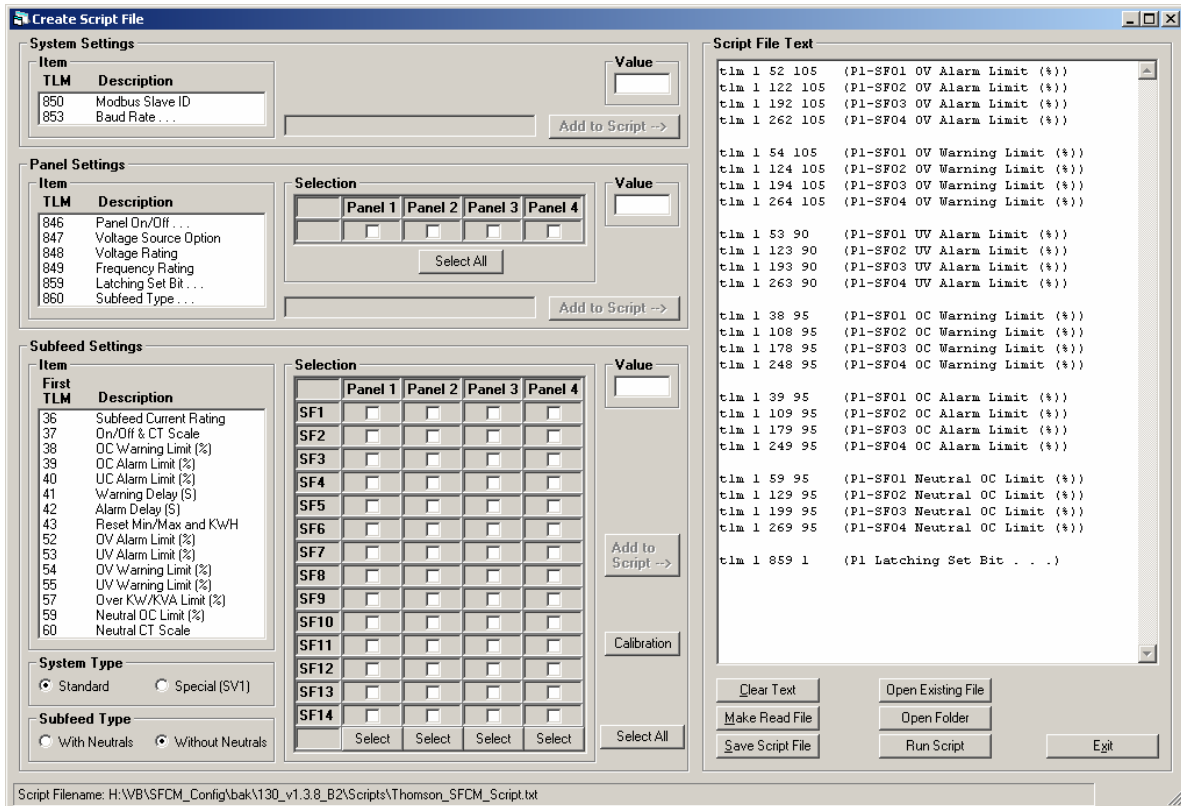


Figure 16-1 – The Create Script File Window

16.1 Procedure for Creating a New Script File

The following procedure can be used for creating a new script file.

16.1.1 Clear the Script File Text Box

16.1.1.1 Clear the Script File Text Box by clicking the Clear Text button.

16.1.2 Add System Settings to the Script File Text as Follows:

16.1.2.1 Starting at the upper left-hand corner of the window, select a System Setting you want to add to the script file by clicking the item in the Item frame.

16.1.2.2 Enter the new value you want to for this item in the Value textbox.

16.1.2.3 Click the Add to Script button to add this command to the script file. The new command line should appear in the large Script File Text box on the right-hand side of the window.

Note: The text in the Script File Text box can be manual edited or deleted, like using Notepad.

16.1.2.4 You can repeat this process to add other "System Settings" items, if required.

16.1.3 Add Panel Settings to the Script File Text as Follows:

16.1.3.1 Select a Panel Setting you want to add to the script file by clicking the item in the Panel Settings – Item frame.

- 16.1.3.2 In the Selection frame, select the panel or panels you want to add by checking the appropriate checkboxes. (The "Select All" button can be used to select or unselect all panels.)
- 16.1.3.3 Enter the new value you want to for this item in the Value textbox. (This value will be used for all panels selected.)
- 16.1.3.4 Click the Add to Script button to add this item to the script file. The new command line/s should appear in the Script File Text box on the right-hand side of the window.
- 16.1.3.5 You can repeat this process to add other "System Settings" items, if required.

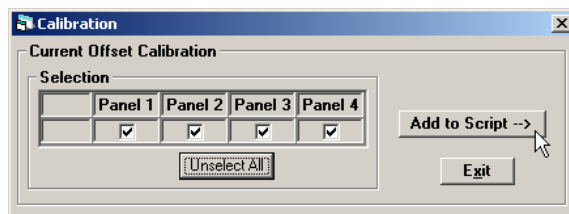
16.1.4 Add Subfeed Settings to the Script File Text as Follows:

- 16.1.4.1 Select a Subfeed Setting you want to add to the script file by clicking the item in the Subfeed Settings – Item frame.
- 16.1.4.2 In the Selection frame, select the Subfeed/s and Panel/s you want to add by checking the appropriate checkboxes. (The "Select" buttons at the bottom of the checkboxes can be used to select or unselect all items in the column above the button. The "Select All" button to the right can be used to select or unselect all items in all columns.)
- 16.1.4.3 Enter the new value you want to for this item in the Value textbox. (This value will be used for all items selected.)
- 16.1.4.4 Click the Add to Script button to add this item to the script file. The new command line/s should appear in the Script File Text box on the right-hand side of the window.
- 16.1.4.5 You can repeat this process to add other "Subfeed Settings" items, if required.

16.1.5 Current Offset Calibration:

This application provides the option of putting Current Offset Calibration for each panel into script file. Perform the following steps to add Current Offset Calibration to the script file.

- 16.1.5.1 To open the Calibration window, click the Calibration button at the lower right-hand side of the Subfeed Settings frame.
- 16.1.5.2 In the Calibration window, select the panels to be "current-offset" calibrated.
- 16.1.5.3 Click the "Add to Script" button. (See below.)



16.1.6 Save the Script File as Follows:

- 16.1.6.1 You can edit or delete text in the Script File Text box if necessary. When ready, save the finished script file by clicking the "Save Script File" button. A "Save As" dialog box will appear, prompting you for a new file name for the new script file. The default folder for saving script files is the "\Scripts" subfolder in the application's folder.

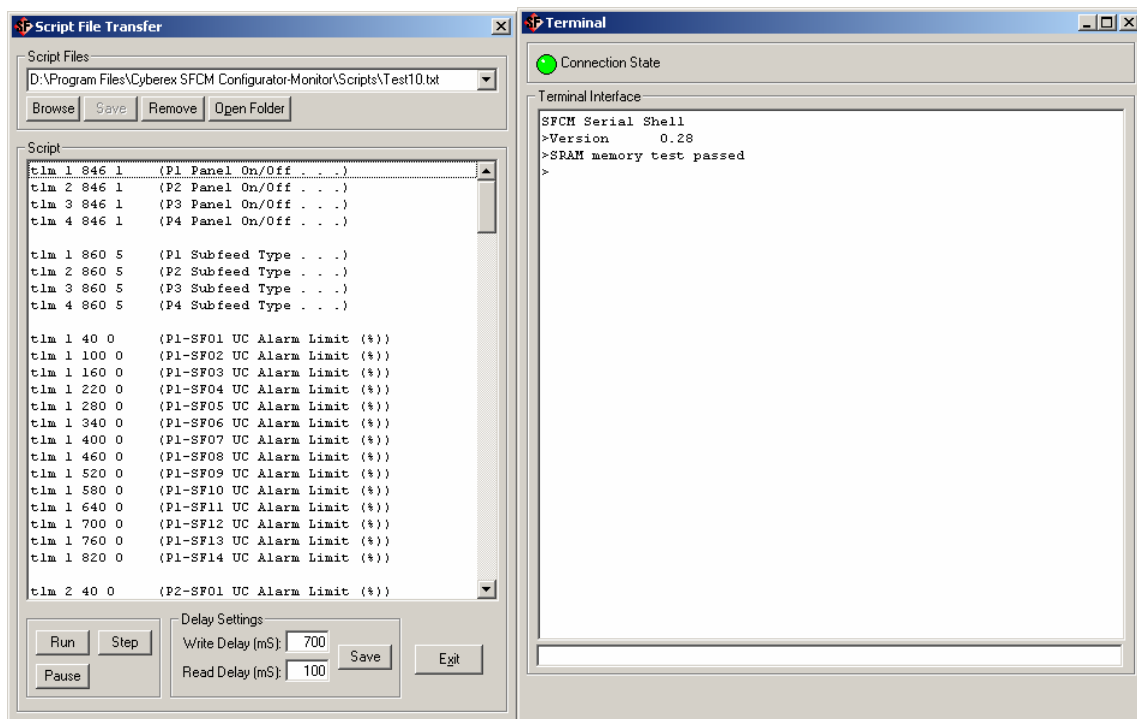
16.2 Procedure for Creating a "Verify Script File"

After a new script file has been created, it may be a good idea to create another script file to use for verifying that the new settings have been actually saved in the SFCM after being configured. This "Verify Script File" or "Read File" can be easily created from an existing setup script file as follows.

With the script file text in the Script File Text box (e.g., after saving the script file in the procedure above), click the "Make Read File" button. (This changes the text in the Script File Text box into commands for reading data instead of writing data to the SFCM.) Then save the text to a new file by clicking the "Save Script File" button. In the "Save As" dialog box, which will appear, enter a new file name that distinguishes this as a "Verify Script File" or "Read File".

17.0 Running Service Port Script Files

This application can be used to run service port script files for configuring SFCM units and for verifying the settings after configuring. To open the Script File Transfer window, select Scripts→Run Script in the main menu bar. The window will open and the Terminal window should open a few seconds later as shown below.



The program will load the last script file used. To load another script file, click the Browse button and select an existing script file in the "Open" dialog box, which will appear. (The "Script File Transfer" window can also be opened from the "Create Script File" window by click the "Run Script" button in that window. When opened this way, the current script file in the "Create Script File" window will be loaded into the "Script File Transfer" window.)

When you have the correct script file loaded, click the Run button in the "Script File Transfer" window. You should see the highlighter bar shift down in the "Script" list box and the commands being echoed in the Terminal Interface textbox in the Terminal window.