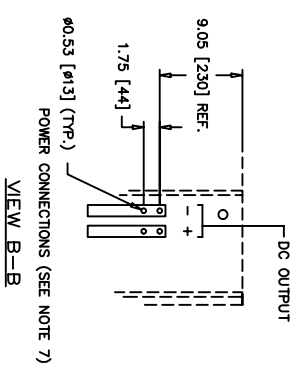
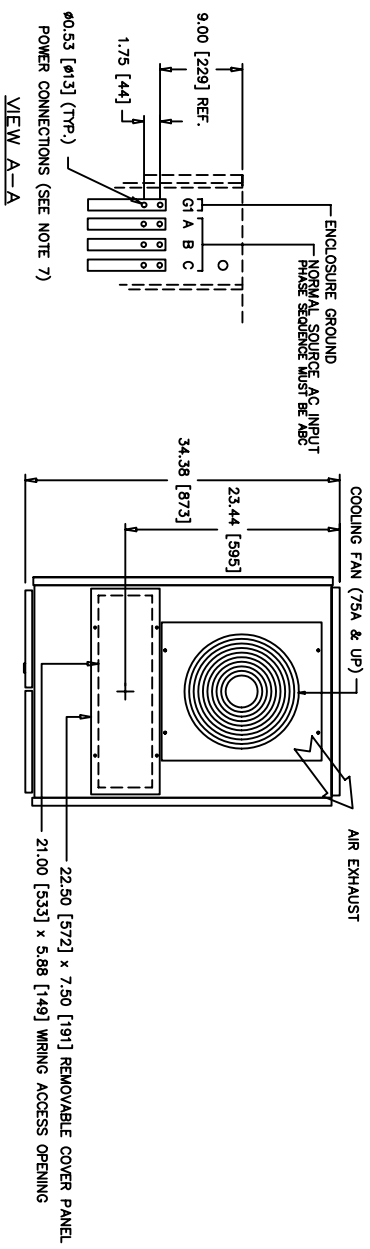
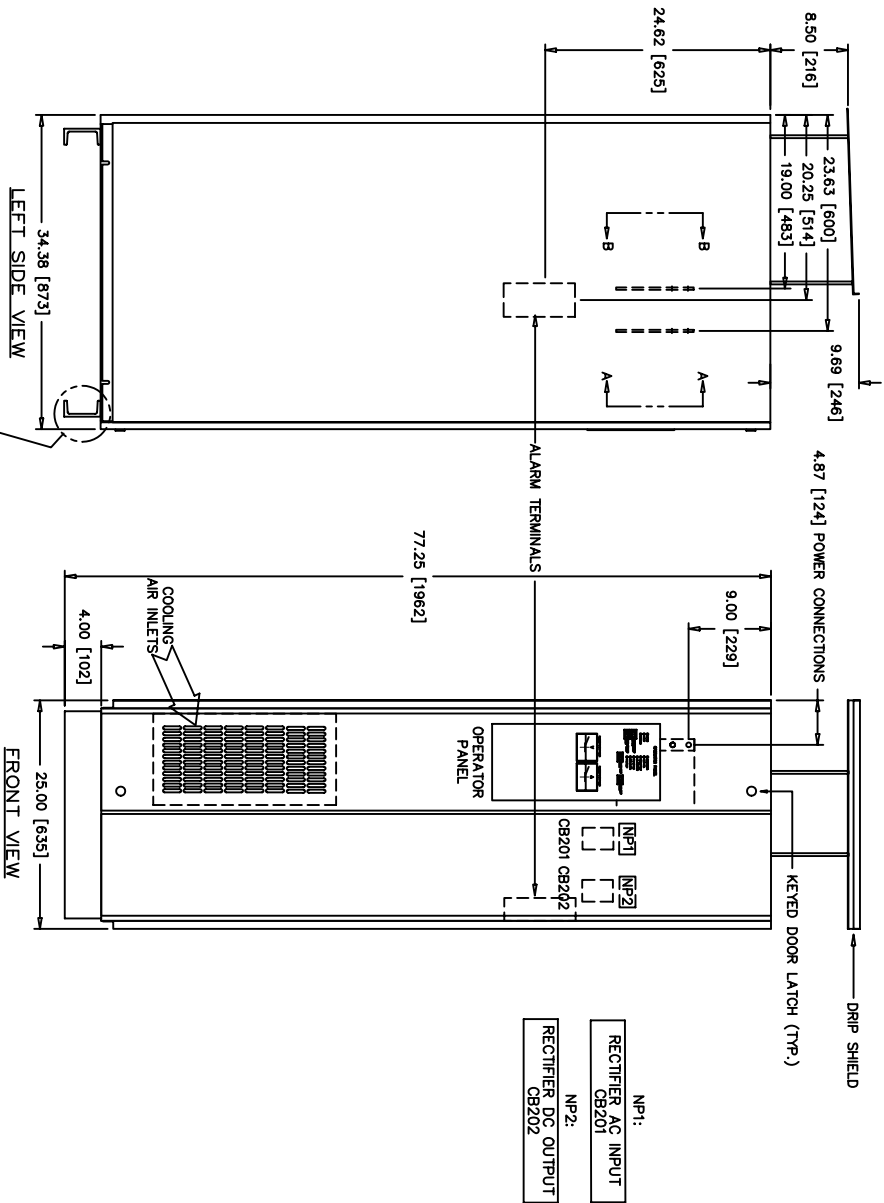


MODEL	WEIGHT	
	LBS	KG
RBE-130-050-XXX-33-60	450	204
RBE-130-075-XXX-33-60	550	250
RBE-130-100-XXX-33-60	550	250
RBE-130-150-XXX-33-60	750	340
RBE-130-200-XXX-33-60	900	408



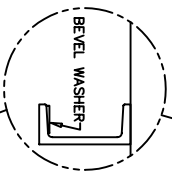
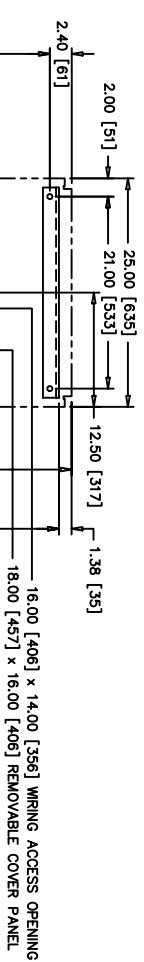
NOTES:

1. DEVICE LEGEND (ALL DEVICES LOCATED BEHIND RIGHT FRONT DOOR)
CB201 - RECTIFIER AC INPUT CIRCUIT BREAKER
CB202 - RECTIFIER AC OUTPUT DISCONNECT SWITCH
2. ALL DIMENSIONS EXPRESSED AS: INCH [MILLIMETER]
3. RECOMMENDED MINIMUM CLEARANCES:
FRONT 36.00 [914.40], REAR 0.00 [0.00], TOP 12.00 [304.80], SIDES 0.00 [0.00].
4. SYSTEM MUST HAVE ALL PANELS AND DOORS INSTALLED FOR PROPER OPERATION.
5. SQUARE BEVEL WASHER (16-2/3% SLOPE) NEEDED AT BOLT-DOWN HOLES WHEN EQUIPMENT IS TO BE BOLTED TO FLOOR.
6. FINISH: LT. GRAY ENAMEL PER CYBEREX PAINT SPEC A-7969.
7. OVER CURRENT PROTECTION MUST BE PROVIDED FOR ALL INPUTS TO THE SYSTEM (AC & DC). ALL APPLICABLE CODES MUST BE OBSERVED. CONSULT THE INSTALLATION SECTION OF THE MANUAL FOR SPECIFIC EQUIPMENT INSTALLATION INFORMATION.
8. INSTANTANEOUS INRUSH ON NORMAL SOURCE ENERGIZATION MAY BE 4X RATED FOR 1/2 CYCLE.
9. CABINET INTERCONNECTIONS ARE SUPPLIED BY CYBEREX. WIRES ARE DISCONNECTED FOR SHIPMENT, TAGGED AND COILED UP INSIDE OF CABINETS. WIRES MUST BE RECONNECTED AT TIME OF INSTALLATION.
10. NAMEPLATES: PHENOLIC, ADHESIVE BACKED, BLACK LETTERS ON WHITE BACKGROUND, MACHINE ENGRAVED BEVELED EDGES.



NP1:
RECTIFIER AC INPUT
CB201

NP2:
RECTIFIER DC OUTPUT
CB202



CUSTOMER NAME
P.O. #

ISSUE	ECNR	DESCRIPTION	QSB	DATE	BY	DATE
A		RELEASED				

CYBEREX
 RECTIFIER-RBE
 OUTLINE & MTG DIMS
 12SV/50-200AMP

ORDER -	SCALE	DRAWN	QSB	CHKD	ME
DATE -	1:10	APPRVD	ME	DATE	01/15/01

ThomasBeretta
 Power Solutions

DWG. SIZE NUMBER	D63039-1
SHEET	1 OF 1