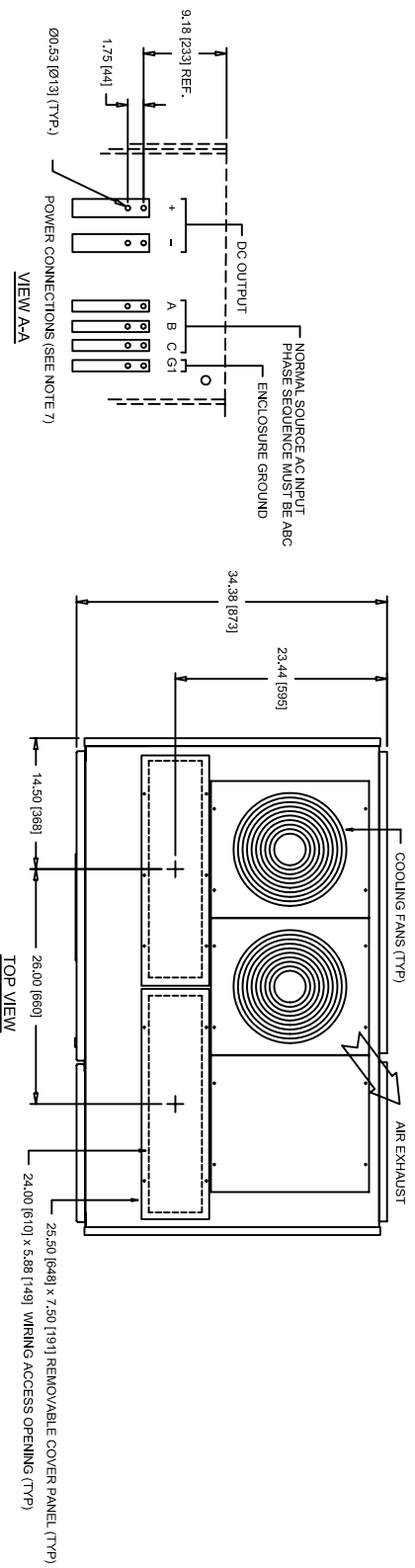
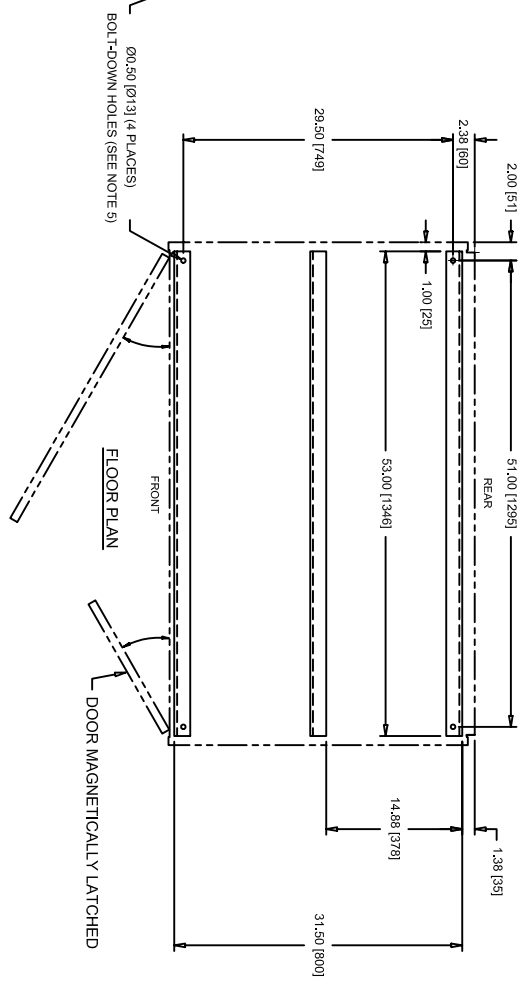
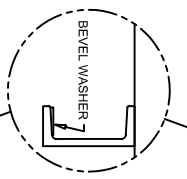
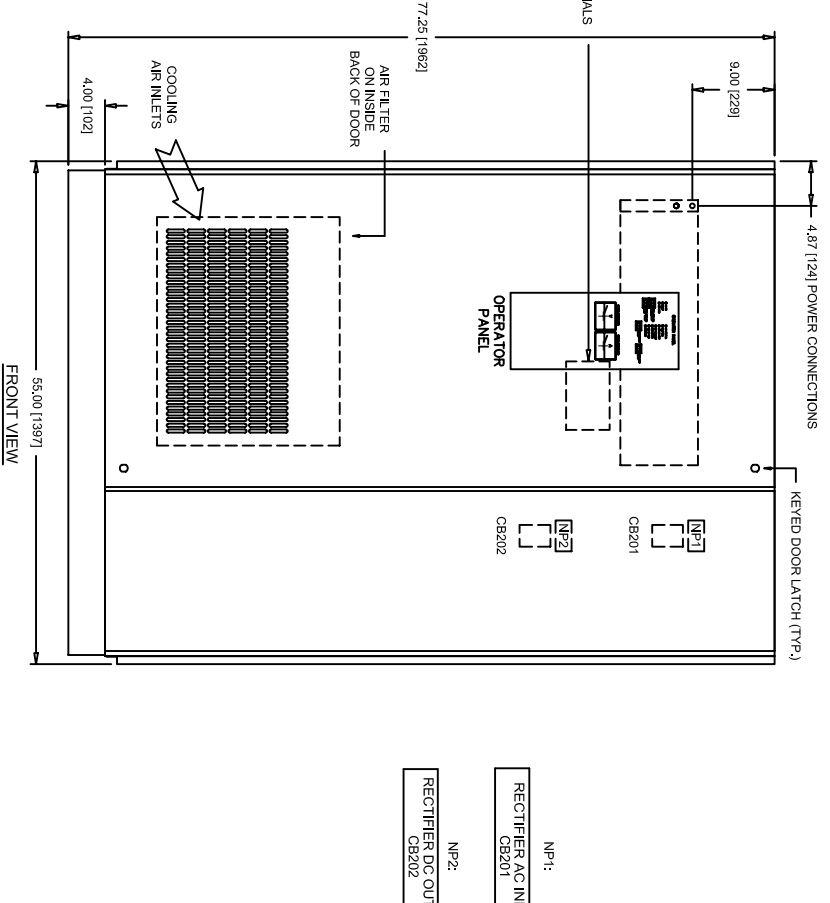
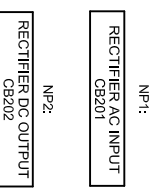
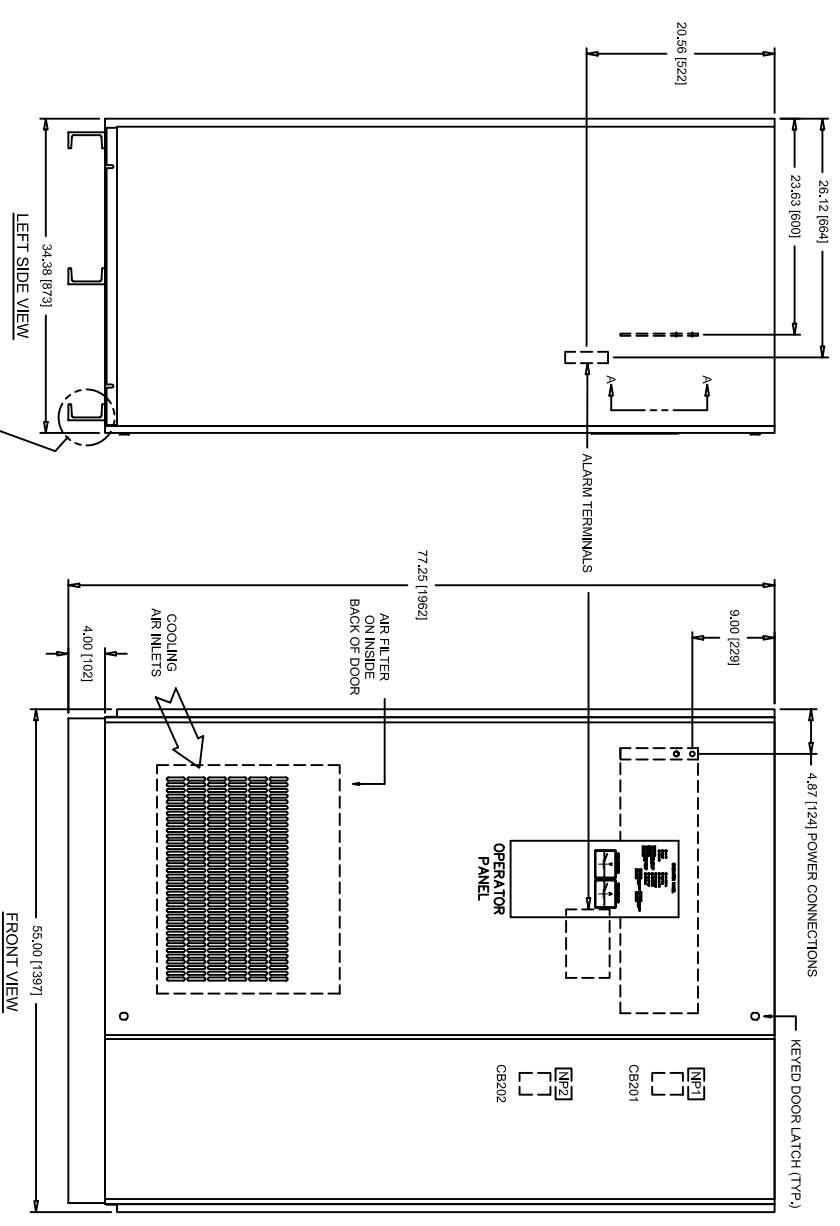
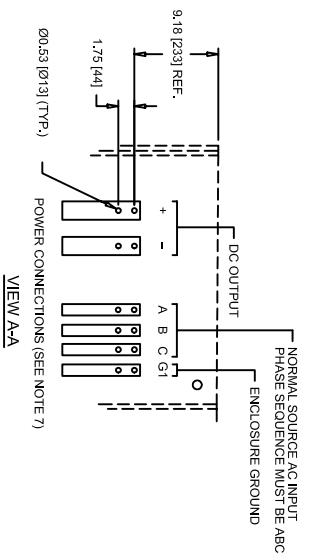


MODEL	WEIGHT	
	LBS	KG
RBE-130-600-480-33-60	2800	1260



NOTES:

1. DEVICE LEGEND (ALL DEVICES LOCATED BEHIND RIGHT FRONT DOOR)  
CB201 - RECTIFIER AC INPUT CIRCUIT BREAKER  
CB202 - RECTIFIER AC OUTPUT DISCONNECT SWITCH
2. ALL DIMENSIONS EXPRESSED AS: INCH [MILLIMETER]
3. RECOMMENDED MINIMUM CLEARANCES:  
FRONT 36.00 [914.40], REAR 0.00 [0.00], TOP 12.00 [304.80],  
SIDES 0.00 [0.00].
4. SYSTEM MUST HAVE ALL PANELS AND DOORS INSTALLED FOR PROPER OPERATION.
5. SQUARE BEVEL WASHER (16-2/3% SLOPE) NEEDED AT BOLT-DOWN HOLES WHEN EQUIPMENT IS TO BE BOLTED TO FLOOR.
6. FINISH: L.T. GRAY ENAMEL PER CYBEREX PAINT SPEC. A-7969.
7. OVER CURRENT PROTECTION MUST BE PROVIDED FOR ALL INPUTS TO THE SYSTEM (AC & DC). ALL APPLICABLE CODES MUST BE OBSERVED. CONSULT THE INSTALLATION SECTION OF THE MANUAL FOR SPECIFIC EQUIPMENT INSTALLATION INFORMATION.
8. INSTANTANEOUS INRUSH ON NORMAL SOURCE ENERGIZATION MAY BE 4X RATED FOR 1/2 CYCLE.
9. NAMEPLATES: PHENOLIC, ADHESIVE BACKED, BLACK LETTERS ON WHITE BACKGROUND, MACHINE ENGRAVED BEVELED EDGES.



**CYBEREX**  
RECTIFIER - RBE  
OUTLINE & MTG DIMS  
125V 600AMP

ISSUE	DESCRIPTION	JHB	JB	11 AUG 08
A	RELEASED			

Thomson-Bretts  
Power Solutions

DATE: 11 AUG 08  
DWG. SIZE NUMBER: D63039-3  
SHEET: 1 OF 1