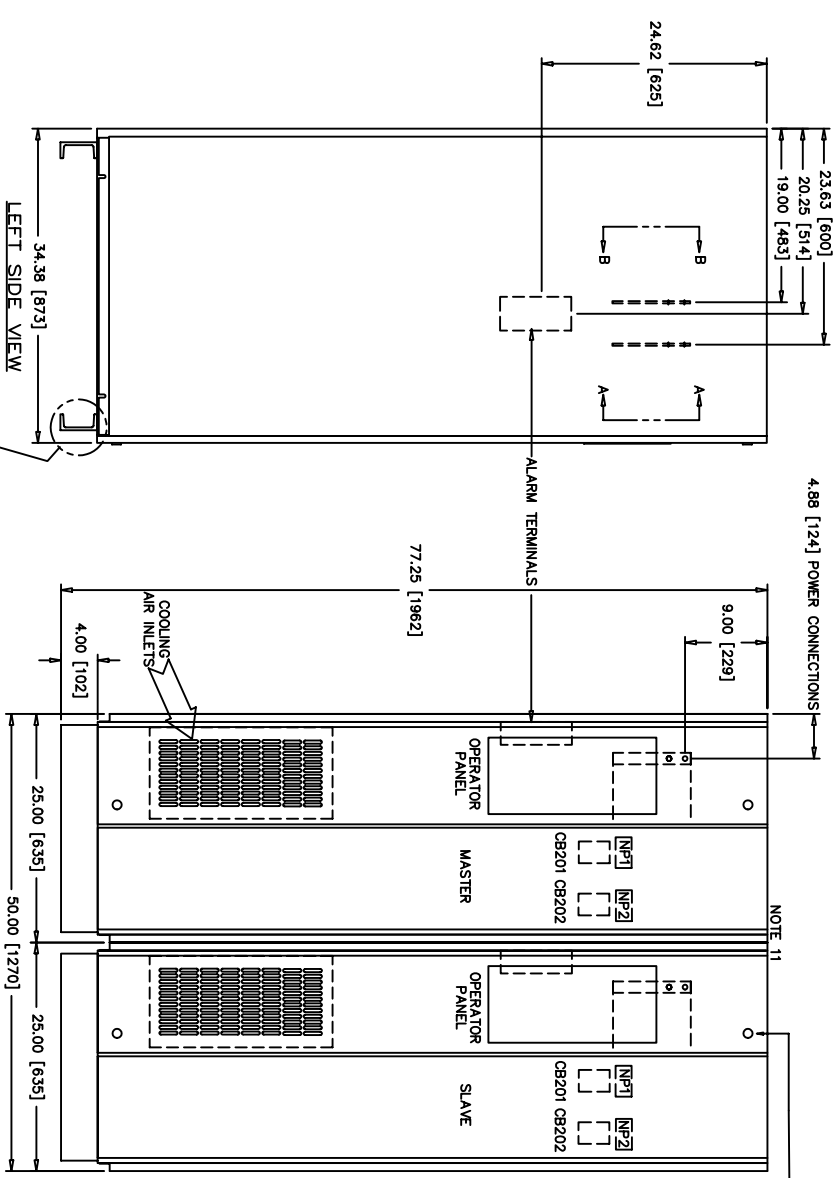
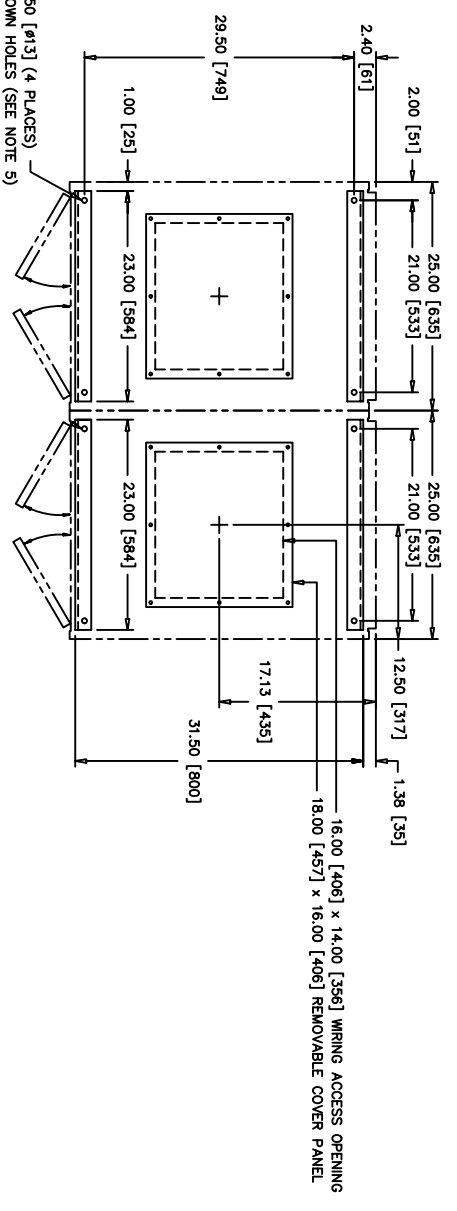
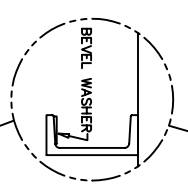


NOTES:

1. DEVICE LEGEND (ALL DEVICES LOCATED BEHIND RIGHT FRONT DOOR)
CB201 – RECTIFIER AC INPUT CIRCUIT BREAKER
CB202 – RECTIFIER DC NON-AUTO CIRCUIT BREAKER
2. ALL DIMENSIONS EXPRESSED AS: INCH [MILLIMETER]
3. RECOMMENDED MINIMUM CLEARANCES:
FRONT 36.00 [914.40], REAR 0.00 [0.00], TOP 12.00 [304.80],
SIDES 0.00 [0.00].
4. SYSTEM MUST HAVE ALL PANELS AND DOORS INSTALLED FOR PROPER OPERATION.
5. SQUARE BEVEL WASHER (16-2/3% SLOPE) NEEDED AT BOLT-DOWN HOLES WHEN EQUIPMENT IS TO BE BOLTED TO FLOOR.
6. FINISH: LT. GRAY ENAMEL PER CYBEREX PAINT SPEC A-7969.
7. OVER CURRENT PROTECTION MUST BE PROVIDED FOR ALL INPUTS TO THE SYSTEM (AC & DC). ALL APPLICABLE CODES MUST BE OBSERVED. CONSULT THE INSTALLATION SECTION OF THE MANUAL FOR SPECIFIC EQUIPMENT INSTALLATION INFORMATION.
8. INSTANTANEOUS INRUSH ON NORMAL SOURCE ENERGIZATION MAY BE 4X RATED FOR 1/2 CYCLE.
9. CABINET INTERCONNECTIONS ARE SUPPLIED BY CYBEREX. WIRES ARE DISCONNECTED FOR SHIPMENT, TAGGED AND COILED UP INSIDE OF CABINETS. WIRES MUST BE RECONNECTED AT TIME OF INSTALLATION.
10. NAMEPLATES: PHENOLIC, ADHESIVE BACKED, BLACK LETTERS ON WHITE BACKGROUND, MACHINE ENGRAVED BEVELED EDGES.



- NOTE 11
- NP1: RECTIFIER AC INPUT CB201
 - NP2: RECTIFIER DC OUTPUT CB202



MODEL	WEIGHT EACH	
	LBS	KG
RBE-130-050-XXX-33-60	450	204
RBE-130-075-XXX-33-60	550	250
RBE-130-100-XXX-33-60	550	250
RBE-130-150-XXX-33-60	750	340
RBE-130-200-XXX-33-60	900	408

RECTIFIER-RBE
125V 50-200AMP
M/S OUTLINE & MTG DIMS

ORDER: -	SCALE: DRWN: PBW	CHKD: CC
JOB: -	1=10 APPYD: CC	DATE: 10/14/02
Thomas Betts POWER SOLUTIONS		
DWG. SIZE NUMBER		D63773-1
SHEET 1		OF 1

This document is the property of Thomas & Betts Power Solutions, LLC. Under no circumstances shall it be reproduced, stored in a retrieval system, or transmitted in any form or by any means, electronic, mechanical, photocopying, recording, or by any information storage and retrieval system, without prior written permission from Thomas & Betts Power Solutions, LLC.