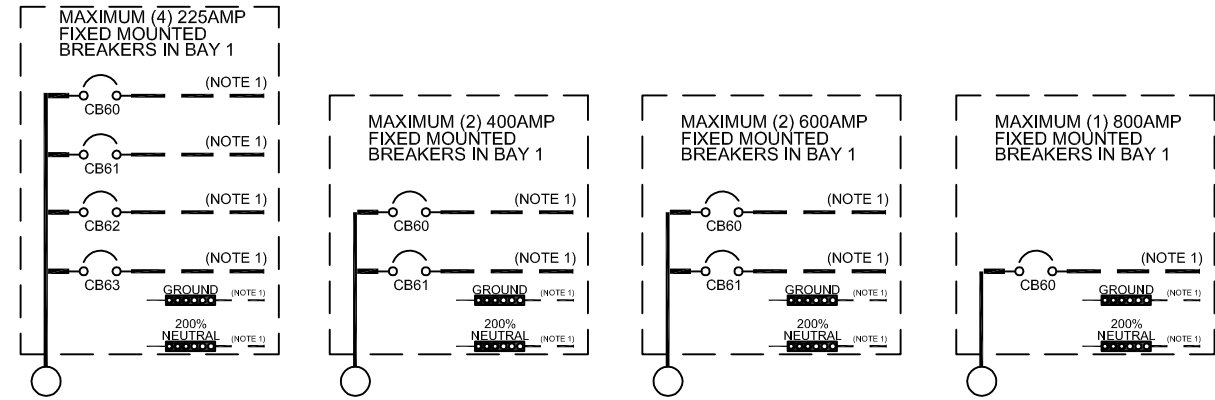


WITH MONITORING:



WITHOUT MONITORING:

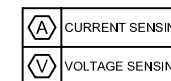
NOTES:

1. EXTERNAL WIRING TO BE PROVIDED BY THE CUSTOMER.

OUTPUT BREAKER NOTES:

1. SUBFEED MONITORING INCLUDES AMPS, VOLTS, PF, KVA, KVAR, KW and KWH
2. SUBFEED MONITORING HAS MODBUS 2-WIRE OR 4-WIRE SELECTABLE AND ALARMS INCLUDES:

- * OVER VOLTAGE
- * UNDER VOLTAGE
- * OVER CURRENT
- * UNDER CURRENT
- * OVER KVA
- * UNDER KVA
- * PHASE LOSS A
- * PHASE LOSS B
- * PHASE LOSS C



CYBEREX.			
MODEL: 400, 600, & 800AMP SYSTEM ONE LINE DIAGRAM WITH OUTPUT DISTRIBUTION OPTIONS			
ORDER #:	SCALE	DRWN: FJ	CHKD: FJ
JOB #:	N/A	APPVD: FJ	DATE: 11 APR 06
Thomas & Betts Power Solutions			DWG SIZE, NUMBER D66160-0
This document is the property of Thomas & Betts Power Solutions LLC. Under copyright law, distribution and reproduction of this document, in whole or in part, is prohibited without prior written permission from Thomas & Betts Power Solutions LLC.			SHEET 2 OF 3