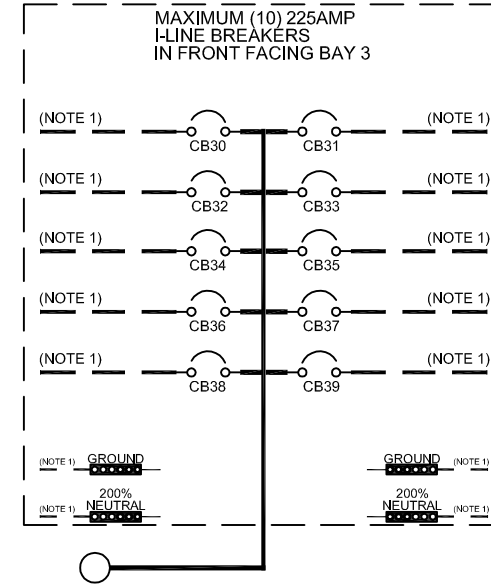
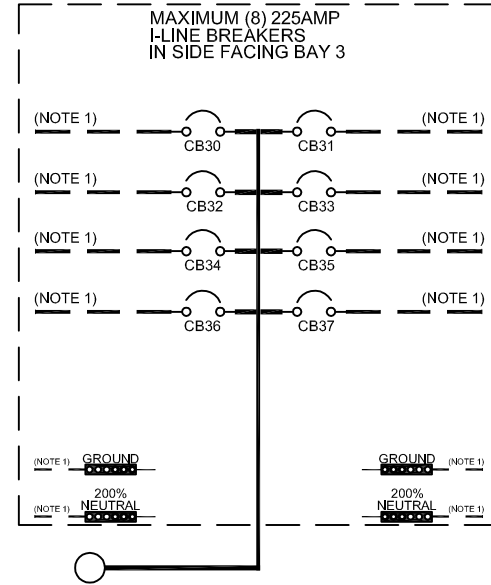
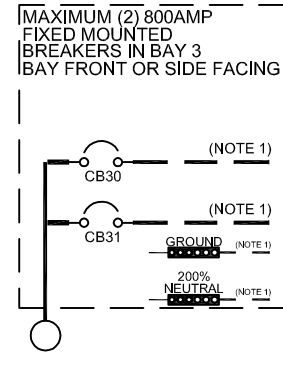
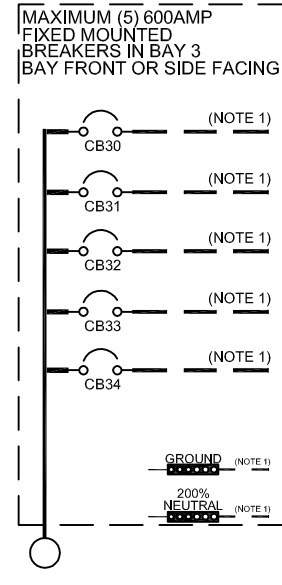
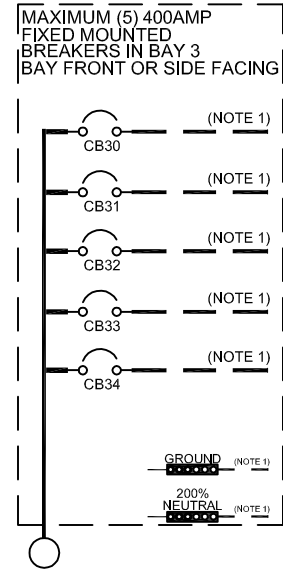
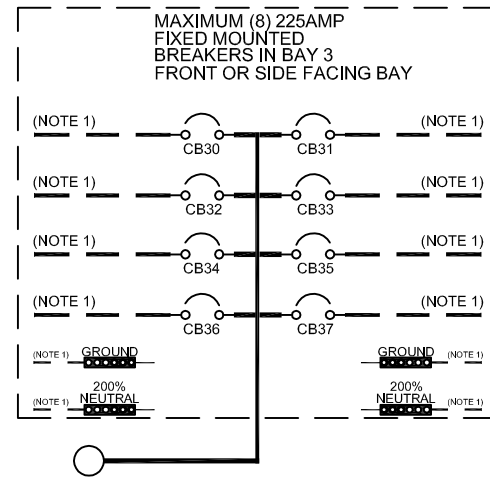
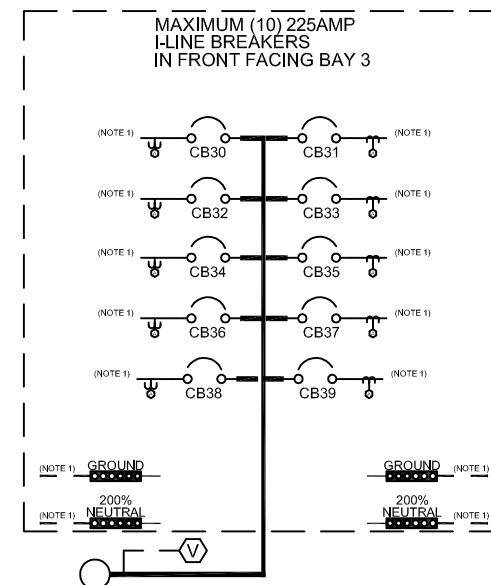
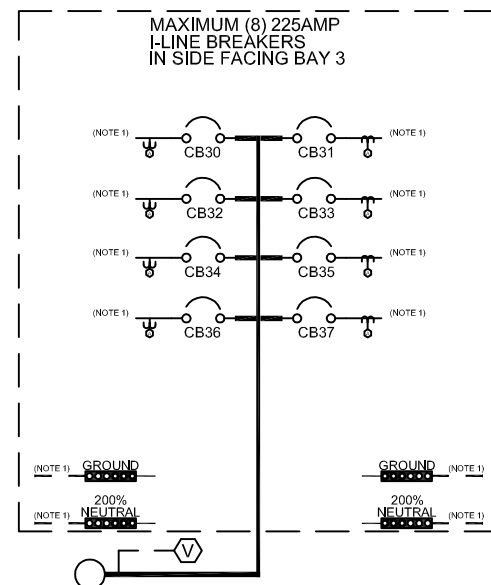
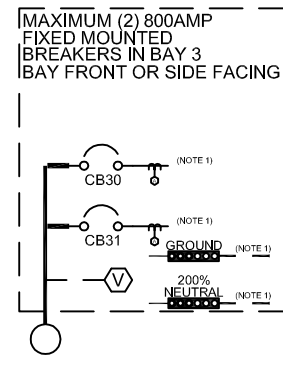
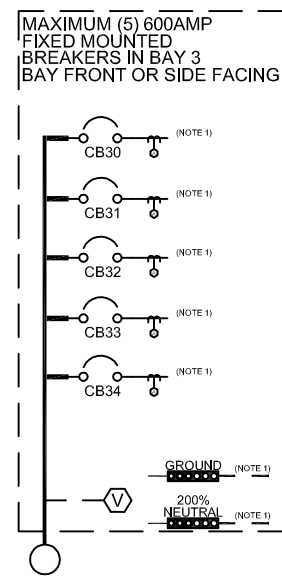
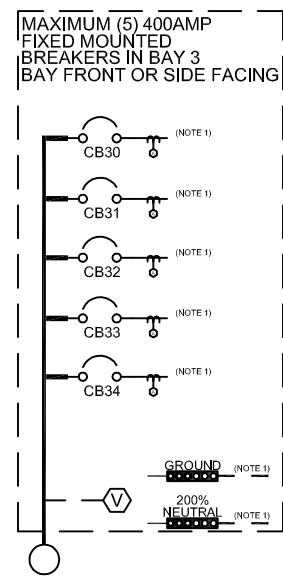
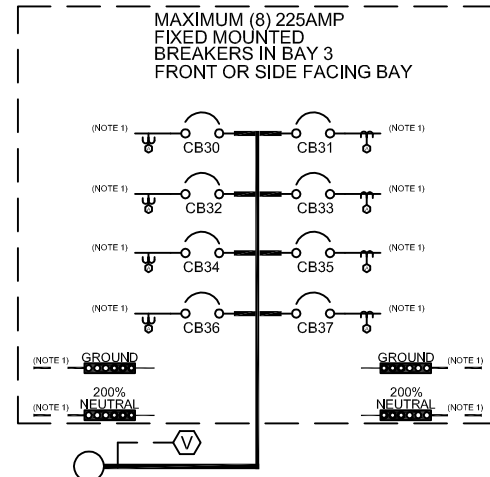


WITHOUT MONITORING:



WITH MONITORING:



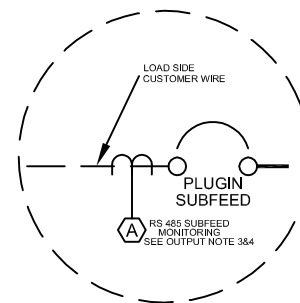
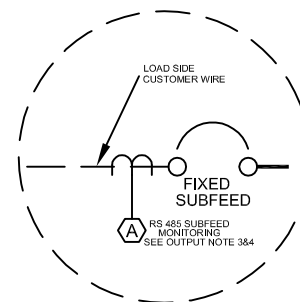
NOTES:

1. EXTERNAL WIRING TO BE PROVIDED BY THE CUSTOMER.

OUTPUT BREAKER NOTES:

- SUBFEED MONITORING INCLUDES AMPS, VOLTS, PF, KVA, KVAR, KW and KWH
- SUBFEED MONITORING HAS MODBUS 2-WIRE OR 4-WIRE SELECTABLE AND ALARMS INCLUDES:

- * OVER VOLTAGE
- * UNDER VOLTAGE
- * OVER CURRENT
- * UNDER CURRENT
- * OVER KVA
- * UNDER KVA
- * PHASE LOSS A
- * PHASE LOSS B
- * PHASE LOSS C



	CURRENT SENSING
	VOLTAGE SENSING



MODEL: 400, 600, & 800AMP
SYSTEM ONE LINE DIAGRAM
WITH OUTPUT DISTRIBUTION OPTIONS

ORDER # -	SCALE	DRWN: FJ	CHKD: FJ
JOB # -	N/A	APPVD: FJ	DATE: 11 APR 06

Thomas & Betts
Power Solutions

DWG SIZE, NUMBER

D66160-0

This document is the property of Thomas & Betts Power Solutions LLC. Under copyright law, distribution and reproduction of this document, in whole or in part, is prohibited without prior written permission from Thomas & Betts Power Solutions LLC.

SHEET 3 OF 3